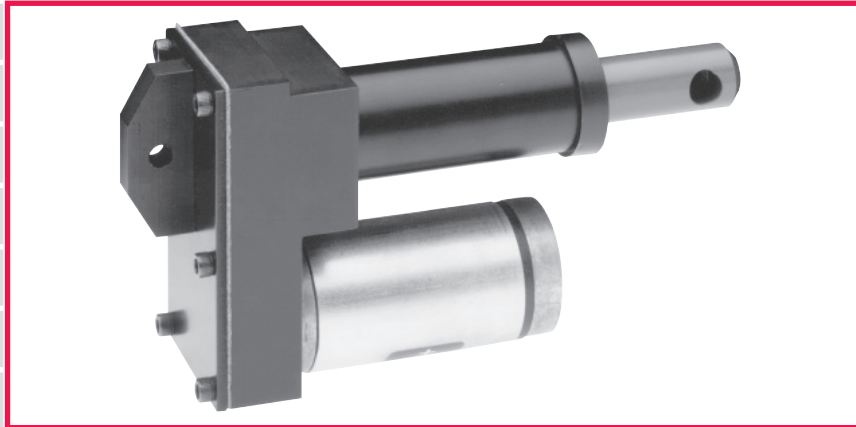


## H5530C Actuator

for SimPlex™ Electro-Mechanical Guiding Systems



- **Compact, low-profile unit**
- **Designed for rugged servo controlled or simple actuation applications**
- **Low cost/high performance**
- **60 lb (267 N) load rating at 1.5" (38 mm)/second nominal actuation speed (see Specifications)**
- **Low backlash drive for optimum performance**
- **Reliable, maintenance-free operation**
- **Standard .75" (19 mm), 1.6" (41 mm) and 3" (76 mm) strokes**
- **In-line mount configuration**
- **Water resistant version available**

The H5530C Actuator is a compact, powerful unit designed for a wide range of applications. Driven by a high power density dc servo motor, it provides precise positioning control at moderate loads.

The H5530C is easy to install. Power is provided through a plug-in connection from the amplifier. The standard cables are 7' (2.1 m) and 15' (4.5 m) long. In most cases it is bolted directly to a SimPlex, displacement guide, or shifting unwind/rewind stand.

H5530C mechanisms are completely enclosed, with a shielded bearing and rod wiper/seal.

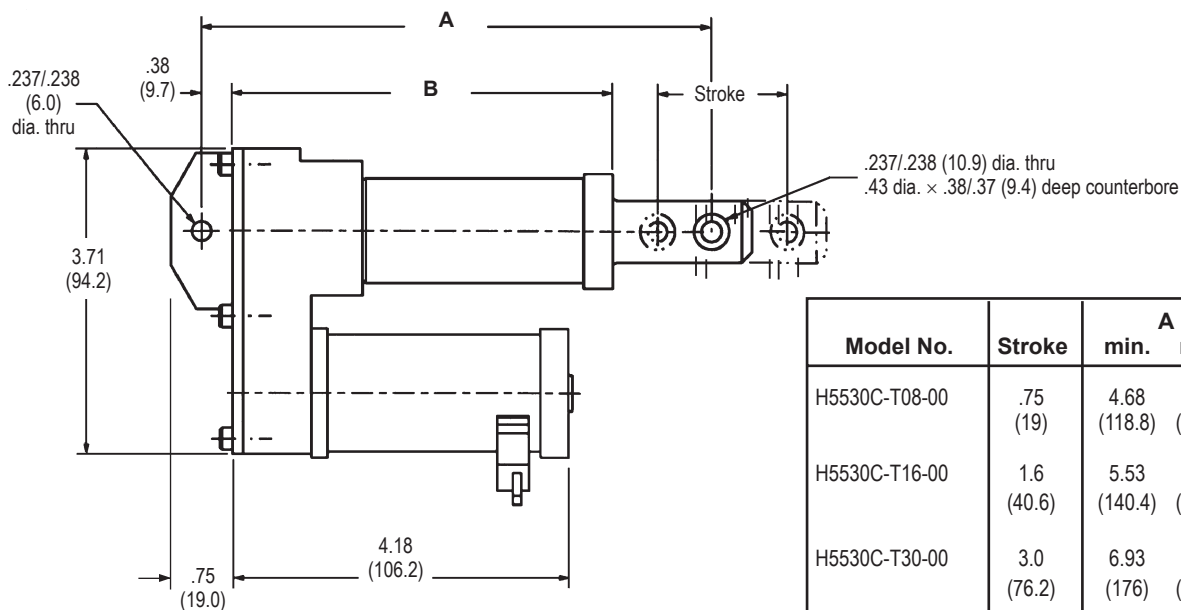
## SPECIFICATIONS

**Load Limit:** 60 lb (267 N) at 1.5" (38 mm)/sec.maximum.  
**Nominal Traverse Speed:** 1.5" (38 mm)/second.  
**Manual Speed:** Adjustable through potentiometer in H6415-AMP.  
**Electrical Connections:** Actuator to motor drive cable with plug-in connections both sides. (Order separately)

**Power:** Supplied by H6415-AMP controller.  
**Back Drive Force:** 60 lb (267 N) [without motor command signal].  
**Strokes:** .75" (19), 1.6" (41) and 3" (76) standard.  
**Operating Temperature Range:** 32-105 F (0-40 C).  
**Standard Mounting Options:** Rod/end clevis mount.  
**Weight:** Approx. 2 lb (.91kg).

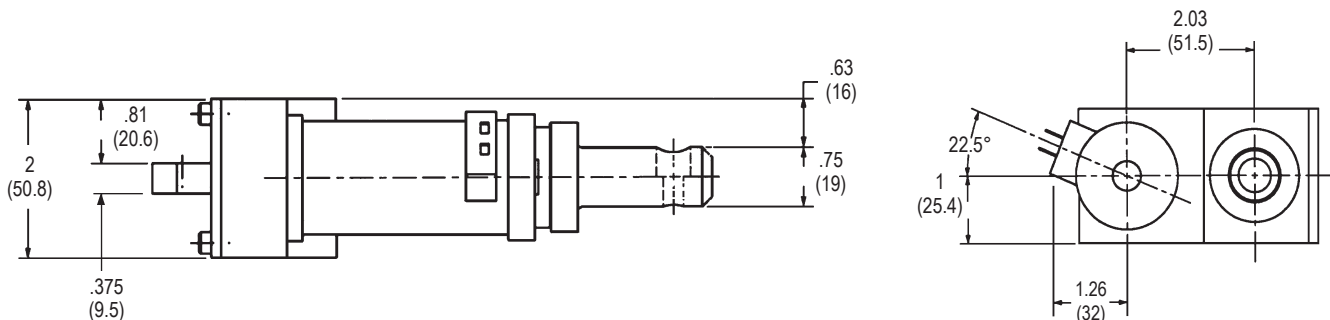
Specify Part No.	Length, ft (m)
H6415-5530C-07A	7 (2.1)
H6415-5530C-15A	15 (4.5)

## DIMENSIONS inches (mm)



Model No.	Stroke	A		B
		min.	max.	
H5530C-T08-00	.75 (19)	4.68 (118.8)	5.43 (137.9)	3.88 (98.5)
H5530C-T16-00	1.6 (40.6)	5.53 (140.4)	7.13 (181.1)	4.73 (120.1)
H5530C-T30-00	3.0 (76.2)	6.93 (176)	9.93 (252.2)	6.13 (155.6)

Note: Motor can be rotated to prevent cable interference.



DIMENSIONS SHOWN ARE SUBJECT TO CHANGE. PLEASE OBTAIN CERTIFIED PRINTS FROM FIVES NORTH AMERICAN COMBUSTION, INC. IF SPACE LIMITATIONS OR OTHER CONSIDERATIONS MAKE EXACT DIMENSION(S) CRITICAL.

### Fives North American Combustion, Inc. Guiding Systems

4455 EAST 71st STREET, CLEVELAND, OH 44105 USA  
Tel: 216.271.6000 Fax: 216.641.7852

email: [fna.guiding@fivesgroup.com](mailto:fna.guiding@fivesgroup.com) • [www.fivesgroup.com/fivesna](http://www.fivesgroup.com/fivesna)