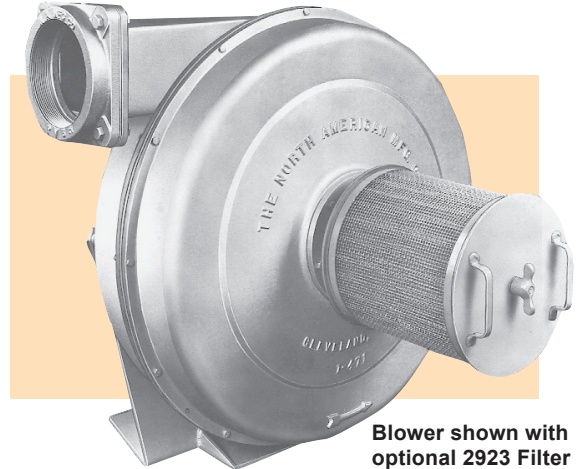


FEATURES

- Widest range of sizes available in the turbo blower market to meet the needs of the combustion, drying, and process industries.
- Energy efficient 60 hertz motors on all blowers 5 hp and above that meet or exceed the 1992 Energy Act which became effective in 1997.
- High volume blowers are available in 1800 rpm or 3600 rpm with single or multiple stage designs to meet the needs of the most demanding situations.
- Horsepower and impeller selection designed to achieve flat performance curves to minimize variations over the operating range of the blower.
- Full array of accessories include filters, silencers, filter silencers, inlet and outlet adapters, flexible sleeves, inlet vane dampers, AC frequency drives, combination motor starters and fusible disconnects. These options offer the protection needed to keep operational costs down while increasing blower life expectancy.



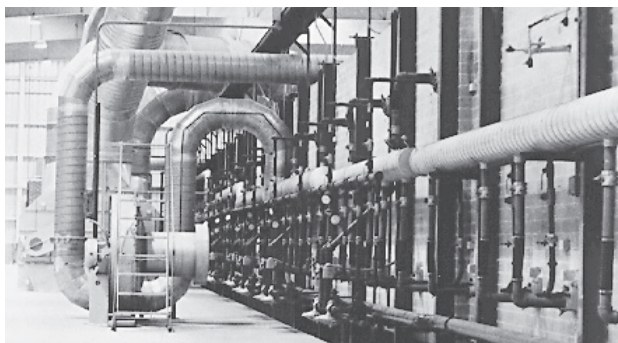
Blower shown with optional 2923 Filter

SELECTION

Pressures and capabilities are shown on the succeeding pages of this bulletin. While motors with 1.15 service factors are more and more available, it is wise to allow some capacity safety margin when picking a blower for a calculated cfm requirements--unanticipated piping leaks, variations in burner capacity, and other unforeseen factors could cause motor overload unless there is some cushion. Without prior knowledge of leakage and other conditions, a 10% safety margin is considered minimum.

It is also important to allow for pressure losses in piping, fittings, and valves, which reduce pressure available at the burner (or other end use).

Altitude and preheated air effect blower ratings--pressure, capacity, and horsepower. For blower selection/performance at altitudes significantly above sea level, the blower section of the **North American Combustion Handbook** is recom-



Typical 2300 Blower Installation

mended. Generally, standard motors can be used up to 3300 feet elevation; special construction is recommended above 3300 feet.

See Bulletin 2600 if Blower will handle air hotter than 250°F.

CONSTRUCTION

All metal construction including mild steel, cast aluminum, or corrosion resistant stainless steel create a nearly indestructible blower allowing for years of trouble free service.

Specially fabricated aluminum or steel impeller designs reduce vibration, lengthen motor life, and lower energy consumption due to lightweight construction technology.

Individual impeller dynamics assured by either single or two plane balancing to minimize vibration and assure longer bearing life.

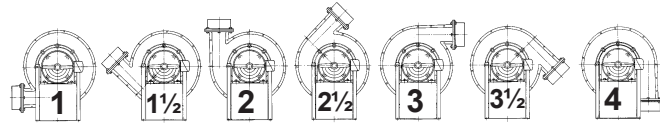
Strategically positioned bolt hole locations allow for in-field repositioning of air flow discharge.

Standard shaft motors on most single stage blowers reduce replacement downtime in the field.

Threaded or SW unthreaded adapters can be specified in place of the guard for mounting optional filters or silencers, or if a 2947 blower sleeve will be used to accommodate inlet piping.

Blowers with 8" or larger discharge are supplied with SW unthreaded adapter suitable for a flexible sleeve or welding. Blowers with 6" or smaller discharge normally have a threaded (fpt) flange, but the SW unthreaded discharge can be specified.

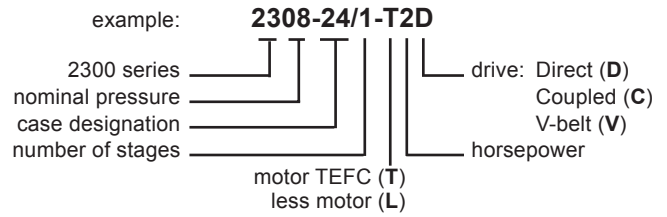
Discharge position numbers as viewed from motor side of blower



| | | | | | | | | |
|---|---|---|---|---|---|---|---|---|
| * | A | x | x | x | x | x | x | x |
| | B | x | x | x | x | x | x | x |
| | C | x | | x | | x | | x |
| | D | x | x | x | x | x | x | |
| | E | x | | x | | x | | |

The letter assigned to each blower below identifies the standard discharge positions available. Contact the Product Manager for other discharge positions (at extra cost and longer delivery).

BLOWER DESIGNATION EXPLANATION



| Nominal pressure osi/wc | Blower designation | Discharge Position Group | cfm at 100% of motor rating | 3600 rpm TEFC 1.15 SF motor | Inlet nominal pipe size | Outlet nominal pipe size | Intake Filter designation | Intake Silencer 2936- | Intake Filter Silencer designation | Approx. weight, lb | | |
|----------------------------|--------------------|--------------------------|-----------------------------|-----------------------------|-------------------------|--------------------------|---------------------------|-----------------------|------------------------------------|---------------------------|--------------------------------|----------------------------|
| | | | | | | | | | | 60 Hertz Direct drive (D) | 50 & 60 Hertz V-Belt drive (V) | 60 Hertz Coupled drive (C) |
| 4 osi 6.92"wc | 2304-11/1-T.3 | C | 110 | T.33-C36T1SC | 3 | 2 | 2923-8-11A | None | 2942-8-11A | 40 | 100 | 100 |
| | 8 osi 13.84"wc | 2308-11/3-T.5 | C | 55 | T.50-C36T1L4.0C | 3 | 2 | 2923-8-11A | None | 2942-8-11A | 50 | 110 |
| 2308-14/1-T. | | C | 60 | T.50-C36T1SC | 3 | 3 | 2923-8-14A | " | 2942-8-14A | 80 | 230 | 210 |
| 2308-14/1-T.75 | | C | 170 | T.75-C36T1SC | 3 | 3 | 2923-8-14A | " | 2942-8-14A | 80 | 230 | 210 |
| 2308-17/1-T1 | | C | 220 | T1.0-C36T1SC | 3 | 4 | 2923-8-17A | " | 2942-8-17A | 90 | 320 | 260 |
| 2308-14/1-T1 | | C | 250 | T1.0-C36T1SC | 3 | 3 | 2923-8-14A | " | 2942-8-14A | 80 | 230 | 210 |
| 2308-17/1-T1.5 | | C | 390 | T1.5-C36T1SC | 4 | 6 | 2923-10-17A | None | 2942-10-17A | 120 | 320 | 260 |
| 2308-24/1-T2 | | E | 460 | T2.0-C36T1SC | 6 | 6 | 2923-10-24A | 8-24 | 2942-10-24A | 150 | 470 | 400 |
| 2308-24/1-T3 | | E | 770 | T3.0-C36T1SC | 6 | 8 | 2923-12-24A | 8-24 | 2942-12-24A | 170 | 490 | 420 |
| 2308-31/1-T5 | | E | 1200 | T5.0-D36T1SC | 8 | 10 | 2923-18-31A | 9-31 | 2942-18-31A | 240 | 700 | 500 |
| 2308-31/1-T7.5 | | E | 1900 | T7.5-D36T1SC | 8 | 10 | 2923-18-31A | 9-31 | 2942-18-31A | 280 | 750 | 550 |
| 10 osi 17.3"wc | 2308-21/1-T10 | B | 2600 | T10-D36T1SC | 10 | 12 | 2923-22-21A | 10-21 | 2942-22-21A | 570 | 950 | 700 |
| | 2310-11/4-T.5 | C | 80 | T.50-C36T1L5.2C | 3 | 2 | 2923-8-11A | None | 2942-8-11A | 60 | 120 | 210 |
| | 2310-19/1-T.75 | C | 70 | T.75-C36T1SC | 3 | 3 | 2923-8-19A | " | 2942-8-19A | 90 | 300 | 300 |
| | 2310-19/1-T1 | C | 150 | T1.0-C36T1SC | 3 | 4 | 2923-8-19A | " | 2942-8-19A | 90 | 300 | 300 |
| | 2310-19/1-T1.5 | C | 290 | T1.5-C36T1SC | 4 | 6 | 2923-8-19B | " | 2942-8-19B | 130 | 340 | 340 |
| | 2310-19/1-T2 | C | 400 | T2.0-C36T1SC | 4 | 6 | 2923-10-19A | None | 2942-10-19A | 140 | 350 | 350 |
| | 2310-26/1-T3 | C | 580 | T3.0-C36T1SC | 6 | 6 | 2923-10-26A | 8-26 | 2942-10-26A | 190 | 500 | 500 |
| | 2310-26/1-T5 | C | 1000 | T5.0-D36T1SC | 6 | 8 | 2923-12-26A | 8-26 | 2942-12-26A | 210 | 520 | 520 |
| | 2310-35/1-T7.5 | C | 1500 | T7.5-D36T1SC | 8 | 10 | 2923-18-35A | 9-35 | 2942-18-35A | 430 | 800 | 600 |
| | 2310-21/1-T10 | B | 1900 | T10-D36T1SC | 10 | 12 | 2923-22-21A | 10-21 | 2942-22-21A | 580 | 950 | 700 |
| 12 osi 20.76"wc | 2310-39/1-T50 | A | 12850 | T50-D36S1SC | 22 | 24 | 2921-1802-8/39 | 18-39 | 2941-1802-8/39 | 1250 | - | - |
| | 2310-39/1-T60 | A | 15000 | T60-D36S1SC | 24 | 24 | 2921-2403-12/39 | 24-39 | 2941-2403-12/39 | 1510 | - | - |
| | 2310-39/1-T75 | A | 18300 | T75-D36S1SCB | 24 | 24 | 2921-2403-12/39 | 24-39 | 2941-2403-12/39 | 1620 | - | - |
| | 2310-39/1-T100 | A | 23320 | T100-D36S1SD | 26 | 26 | 2921-2403-12/39 | 24-39 | 2941-2403-12/39 | 1820 | - | - |
| | 2310-39/1-T125 | A | 27790 | T125-D36S1DB | 26 | 30 | Consult Cleveland | | | 2400 | - | - |
| | 2312-11/4-T.5 | C | 50 | T.50-C36T1L5.2C | 3 | 2 | 2923-8-11A | None | 2942-8-11A | 60 | 120 | 120 |
| | 2312-19/1-T1 | C | 100 | T1.0-C36T1SC | 3 | 3 | 2923-8-19A | " | 2942-8-19A | 90 | 300 | 300 |
| | 2312-19/1-T1.5 | C | 220 | T1.5-C36T1SC | 4 | 4 | 2923-8-19B | " | 2942-8-19B | 130 | 340 | 340 |
| | 2312-19/1-T2 | C | 340 | T2.0-C36T1SC | 4 | 6 | 2923-8-19B | " | 2942-8-19B | 140 | 350 | 350 |
| | 2312-26/1-T3 | C | 450 | T3.0-C36T1SC | 6 | 6 | 2923-10-26A | 8-26 | 2942-10-26A | 190 | 500 | 500 |
| 2312-26/1-T5 | C | 850 | T5.0-D36T1SC | 6 | 8 | 2923-14-26A | 8-26 | 2942-14-26A | 210 | 520 | 520 | |
| 2312-35/1-T7.5 | C | 1400 | T7.5-D36T1SC | 8 | 8 | 2923-18-35A | 9-35 | 2942-18-35A | 430 | 800 | 600 | |
| 2312-35/1-T10 | C | 1700 | T10-D36T1SC | 8 | 10 | 2923-18-35A | 9-35 | 2942-18-35A | 450 | 820 | 620 | |
| 16 osi 27.68"wc | 2312-21/1-T15 | B | 2600 | T15-D36T1SC | 14 | 12 | 2923-22-21B | 14-21 | 2942-22-21B | 600 | 1000 | 750 |
| | 2312-34/1-T20 | A | 4000 | T20-D36T1SC | 14 | 16 | 2923-30-34A | 14-34 | 2942-30-34A | 710 | - | - |
| | 2312-34/1-T25 | A | 4900 | T25-D36S1SC | 14 | 16 | 2923-30-34A | 14-34 | 2942-30-34A | 850 | - | - |
| | 2312-34/1-T30 | A | 5500 | T30-D36S1SC | 16 | 20 | 2923-30-34B | 16-34 | 2942-30-34B | 1030 | - | - |
| | 2312-34/1-T40 | A | 7300 | T40-D36S1SC | 16 | 20 | 2921-1602-8/34 | 16-34 | 2941-1602-8/34 | 1150 | - | - |
| | 2312-37/1-T50 | A | 10100 | T50-D36S1SC | 18 | 22 | 2921-1802-8/37 | 18-37 | 2941-1802-8/37 | 1200 | - | - |
| | 2312-37/1-T60 | A | 12050 | T60-D36S1SC | 18 | 24 | 2921-1802-8/37 | 18-37 | 2941-1802-8/37 | 1460 | - | - |
| | 2312-37/1-T75 | A | 14880 | T75-D36S1SCB | 18 | 24 | 2921-1802-8/37 | 18-37 | 2941-1802-8/37 | 1700 | - | - |
| | 2316-14/2-T1 | C | 90 | T1.0-C36T1L5.5C | 3 | 3 | 2923-8-14A | None | 2942-8-14A | 100 | 250 | 230 |
| | 2316-14/2-T1.5 | C | 150 | T1.5-C36T1L5.5C | 3 | 3 | 2923-8-14A | " | 2942-8-14A | 140 | 290 | 270 |
| 2316-17/2-T1.5 | C | 150 | T1.5-C36T1L6.7C | 4 | 4 | 2923-8-17B | " | 2942-8-17B | 110 | 345 | 285 | |
| 2316-19/1-T2 | C | 150 | T2.0-C36T1SC | 4 | 4 | 2923-8-19B | " | 2942-8-19B | 140 | 350 | 350 | |
| 2316-17/2-T2 | C | 220 | T2.0-C36T1L6.7C | 4 | 4 | 2923-8-17B | None | 2942-8-17B | 140 | 340 | 380 | |
| 2316-26/1-T3 | C | 290 | T3.0-C36T1SC | 6 | 6 | 2923-8-26A | 8-26 | 2942-8-26A | 300 | 605 | 490 | |
| 2316-17/2-T3 | C | 340 | T3.0-C36T1L6.0C | 4 | 6 | 2923-10-17A | None | 2942-10-17A | 160 | 360 | 400 | |
| 2316-19/1-T3 | C | 340 | T3.0-C36T1SC | 4 | 6 | 2923-10-19A | " | 2942-10-19A | 160 | 370 | 370 | |

| Nominal pressure osi/"wc | Blower designation | Discharge Position Group | cfm at 100% of motor rating | 3600 rpm TEFC 1.15 SF motor | Inlet nominal pipe size | Outlet nominal pipe size | Intake Filter designation | Intake Silencer 2936- | Intake Filter Silencer designation | Approx. weight, lb | | |
|-----------------------------|--------------------|--------------------------|-----------------------------|-----------------------------|-------------------------|--------------------------|---------------------------|-----------------------|------------------------------------|---------------------------|--------------------------------|----------------------------|
| | | | | | | | | | | 60 Hertz Direct drive (D) | 50 & 60 Hertz V-Belt drive (V) | 60 Hertz Coupled drive (C) |
| 16 osi 27.68"wc | 2316-24/2-T3 | E | 350 | T3.0-C36T1L7.0C | 6 | 6 | 2923-10-24A | 8-24 | 2942-10-24A | 205 | 510 | 435 |
| | 2316-24/2-T5 | E | 600 | T5.0-C36T1L7.0C | 6 | 6 | 2923-10-24A | 8-24 | 2942-10-24A | 220 | 530 | 470 |
| | 2316-28/1-T5 | C | 600 | T5.0-D36T1SC | 8 | 6 | 2923-14-28A | 9-28 | 2942-14-28A | 215 | 720 | 570 |
| | 2316-26/1-T5 | C | 620 | T5.0-D36T1SC | 6 | 6 | 2923-12-26A | 8-26 | 2942-12-26A | 220 | 530 | 530 |
| | 2316-31/2-T7.5 | E | 850 | T7.5-D36T1L8.3C | 8 | 8 | 2923-14-31A | 9-31 | 2942-14-31A | 320 | 790 | 590 |
| | 2316-28/1-T7.5 | C | 950 | T7.5-D36T1SC | 8 | 6 | 2923-14-28A | 9-28 | 2942-14-28A | 235 | 810 | 630 |
| | 2316-26/1-T7.5 | C | 1000 | T7.5-D36T1SC | 6 | 8 | 2923-14-26A | 8-26 | 2942-14-26A | 260 | 570 | 570 |
| | 2316-31/2-T10 | E | 1200 | T10-D36T1L8.3C | 8 | 8 | 2923-18-31A | 9-31 | 2942-18-31A | 340 | 810 | 610 |
| | 2316-35/1-T10 | C | 1300 | T10-D36T1SC | 8 | 8 | 2923-18-35B | 9-35A | 2942-18-35B | 460 | 830 | 630 |
| | 2316-21/1-T15 | B | 1950 | T15-D36T1SC | 10 | 10 | 2923-22-21A | 10-21 | 2942-22-21A | 425 | 1150 | 885 |
| | 2316-35/1-T15 | C | 2000 | T15-D36T1SC | 8 | 10 | 2923-18-35B | 9-35A | 2942-18-35B | 490 | 860 | 660 |
| | 2316-21/1-T20 | B | 2700 | T20-D36T1SC | 10 | 10 | 2923-22-21A | 10-21 | 2942-22-21A | 670 | 1050 | 820 |
| | 2316-33/1-T25 | B | 3300 | T25-D36T1SC | 12 | 12 | 2923-22.5-33A | 12-33 | 2942-22.5-33A | 1100 | 1900 | 1400 |
| | 2316-33/1-T30 | B | 4100 | T30-D36T1SC | 12 | 14 | 2923-30-33A | 12-33 | 2942-30-33A | 1200 | 2000 | 1500 |
| | 2316-37/1-T40 | A | 5300 | T40-D36S1SC | 16 | 18 | 2923-30-37A | 16-37 | 2942-30-37A | 1090 | - | - |
| | 2316-37/1-T50 | A | 6730 | T50-D36S1SC | 16 | 18 | 2921-1602-8/37 | 16-37 | 2941-1602-8/37 | 1100 | - | - |
| | 2316-37/1-T60 | A | 8650 | T60-D36S1SC | 18 | 24 | 2921-1802-8/37 | 16-37 | 2941-1802-8/37 | 1420 | - | - |
| | 2316-37/1-T75 | A | 11000 | T75-D36S1SCB | 18 | 24 | 2921-1802-8/37 | 18-37 | 2941-1802-8/37 | 1570 | - | - |
| | 2316-37/1-T100 | A | 14500 | T100-D36S1SD | 20 | 24 | 2921-2003-12/37 | 20-37 | 2941-2003-12/37 | 1730 | - | - |
| | 20 osi 34.60"wc | 2320-19/2-T1.5 | C | 100 | T1.5-C36T1L6.7C | 3 | 3 | 2923-8-19A | None | 2942-8-19A | 160 | 370 |
| 2320-19/2-T2 | | C | 170 | T2.0-C36T1L6.7C | 4 | 4 | 2923-8-19B | " | 2942-8-19B | 170 | 380 | 380 |
| 2320-19/2-T3 | | C | 290 | T3.0-C36T1L7.0C | 4 | 4 | 2923-8-19B | " | 2942-8-19B | 190 | 400 | 400 |
| 2320-26/2-T5 | | C | 500 | T5.0-D36T1L7.0C | 6 | 6 | 2923-10-26A | 8-26 | 2942-10-26A | 260 | 570 | 570 |
| 2320-26/2-T7.5 | | C | 720 | T7.5-D36T1L7.0C | 6 | 6 | 2923-12-26A | 8-26 | 2942-12-26A | 300 | 610 | 610 |
| 2320-35/1-T10 | | C | 1000 | T10-D36T1SC | 8 | 8 | 2923-14-35B | 9-35A | 2942-14-35B | 470 | 840 | 640 |
| 2320-21/1-T15 | | B | 1500 | T15-D36T1SC | 10 | 8 | 2923-18-21A | 10-21 | 2942-18-21A | 625 | 1150 | 885 |
| 2320-35/1-T15 | | C | 1700 | T15-D36T1SC | 8 | 8 | 2923-18-35B | 9-35A | 2942-18-35B | 550 | 920 | 720 |
| 2320-21/1-T20 | | B | 2100 | T20-D36T1SC | 10 | 10 | 2923-22-21A | 10-21 | 2942-22-21A | 680 | 1050 | 830 |
| 2320-33/1-T25 | | B | 2900 | T25-D36T1SC | 12 | 12 | 2923-22.5-33A | 12-33 | 2942-22.5-33A | 1100 | 1900 | 1400 |
| 2320-33/1-T30 | | B | 3400 | T30-D36T1SC | 12 | 12 | 2923-22.5-33A | 12-33 | 2942-22.5-33A | 1200 | 2000 | 1500 |
| 2320-33/1-T40 | | D | 4500 | T40-D36T1SC | 12 | 14 | 2923-30-33A | 12-33 | 2942-30-33A | 1250 | 2050 | 1550 |
| 2320-33/1-T50 | | D | 5800 | T50-D36T1SC | 12 | 14 | 2921-1202-6/33 | 12-33 | 2941-1202-6/33 | 1800 | 2400 | 2300 |
| 2320-37/1-T60 | | A | 7470 | T60-D36S1SC | 18 | 20 | 2921-1802-8/37 | 18-37 | 2941-1802-8/37 | 1410 | - | - |
| 2320-37/1-T75 | | A | 8900 | T75-D36S1SCB | 18 | 20 | 2921-1802-8/37 | 18-37 | 2941-1802-8/37 | 1490 | - | - |
| 2320-37/1-T100 | | A | 11830 | T100-D36S1SD | 18 | 22 | 2921-1802-8/37 | 18-37 | 2941-1802-8/37 | 1620 | - | - |
| 2320-37/1-T125 | | A | 14800 | T125-D36S1SDB | 20 | 26 | 2921-2003-12/37 | 20-37 | 2941-2003-12/37 | 2360 | - | - |
| 2320-37/1-T150 | | A | 17800 | T150-D36S1SD | 22 | 26 | 2921-2403-12/37 | 24-37 | 2941-2403-12/37 | 2500 | - | - |
| 2320-39/1-T200 | | A | 25000 | T200-D36S1SD | 22 | 30 |] Consult Cleveland [| | | 2810 | - | - |
| 2320-39/1-T250 | | A | 30000 | T250-D36S1SD | 30 | 30 | | | | 3540 | - | - |
| 24 osi 41.52"wc | 2324-14/3-T1.5 | C | 80 | T1.5-C36T1L9.0C | 3 | 3 | 2923-8-14A | None | 2942-8-14A | 160 | 310 | 290 |
| | 2324-14/3-T2 | C | 120 | T2.0-C36T1L9.0C | 3 | 3 | 2923-8-14A | " | 2942-8-14A | 170 | 320 | 300 |
| | 2324-19/2-T3 | C | 210 | T3.0-C36T1L7.0C | 4 | 4 | 2923-8-19B | " | 2942-8-19B | 100 | 400 | 400 |
| | 2324-26/2-T5 | C | 370 | T5.0-D36T1L7.0C | 6 | 6 | 2923-10-26A | 8-26 | 2942-10-26A | 260 | 570 | 570 |
| | 2324-26/2-T7.5 | C | 600 | T7.5-D36T1L7.0C | 6 | 6 | 2923-12-26A | 8-26 | 2942-12-26A | 300 | 610 | 610 |
| | 2324-35/2-T10 | C | 810 | T10-D36T1L8.3C | 8 | 8 | 2923-14-35A | 9-35 | 2942-14-35A | 520 | 890 | 690 |
| | 2324-35/2-T15 | C | 1400 | T15-D36T1L8.3C | 8 | 8 | 2923-18-35A | 9-35 | 2942-18-35A | 550 | 920 | 720 |
| | 2324-21/1-T20 | B | 1800 | T20-D36T1SC | 10 | 10 | 2923-18-21A | 10-21 | 2942-18-21A | 680 | 1050 | 830 |
| | 2324-33/1-T25 | B | 2400 | T25-D36T1SC | 12 | 12 | 2923-22-33A | 12-33 | 2942-22-33A | 1100 | 1900 | 1400 |
| | 2324-33/1-T30 | B | 2800 | T30-D36T1SC | 12 | 12 | 2923-22-33A | 12-33 | 2942-22-33A | 1200 | 2000 | 1500 |
| | 2324-33/1-T40 | D | 3700 | T40-D36T1SC | 12 | 12 | 2923-30-33A | 12-33 | 2942-30-33A | 1250 | 2050 | 1550 |
| | 2324-33/1-T50 | D | 5200 | T50-D36T1SC | 14 | 14 | 2921-1402-6/33 | 14-33 | 2941-1202-6/33 | 1350 | 2150 | 1650 |
| | 2324-33/1-T60 | D | 6200 | T60-D36T1SC | 14 | 14 | 2921-1402-8/33 | 14-33 | 2941-1402-8/33 | 1400 | 2200 | 1700 |
| | 2324-37/1-T75 | A | 7300 | T75-D36S1SCB | 16 | 20 | 2921-1602-8/37 | 16-37 | 2941-1602-8/37 | 1490 | - | - |
| 2324-37/1-T100 | A | 10000 | T100-D36S1SD | 18 | 24 | 2921-1802-8/37 | 18-37 | 2941-1802-8/37 | 1690 | - | - | |
| 2324-37/1-T125 | A | 12400 | T125-D36S1SDB | 18 | 24 | 2921-1802-8/37 | 18-37 | 2941-1802-8/37 | 2230 | - | - | |
| 2324-37/1-T150 | A | 14800 | T150-D36S1SD | 22 | 24 | 2921-2403-12/37 | 24-37 | 2941-2403-12/37 | 2370 | - | - | |
| 32 osi 55.36"wc | 2332-19/3-T3 | C | 90 | T3.0-C36T1L10.6C | 4 | 4 | 2923-8-19B | None | 2942-8-19B | 190 | 400 | 400 |
| | 2332-19/3-T5 | C | 260 | T5.0-D36T1L10.6C | 4 | 4 | 2923-8-19B | " | 2942-8-19B | 210 | 420 | 420 |
| | 2332-28/2-T7.5 | C | 330 | T7.5-D36T1L8.3C | 8 | 6 | 2923-14-28A | 9-28 | 2942-14-28A | 380 | 650 | 700 |
| | 2332-28/2-T10 | C | 600 | T10-D36T1L8.3C | 8 | 6 | 2923-14-28A | 9-28 | 2942-14-28A | 400 | 670 | 720 |

| Nominal pressure osi/wc | Blower designation | Discharge Position Group | cfm at 100% of motor rating | 3600 rpm TEFC 1.15 SF motor | Inlet nominal pipe size | Outlet nominal pipe size | Intake Filter designation | Intake Silencer 2936- | Intake Filter Silencer designation | Approx. weight, lb | | |
|----------------------------|--------------------|--------------------------|-----------------------------|-----------------------------|-------------------------|--------------------------|---------------------------|-----------------------|------------------------------------|---------------------------|--------------------------------|----------------------------|
| | | | | | | | | | | 60 Hertz Direct drive (D) | 50 & 60 Hertz V-Belt drive (V) | 60 Hertz Coupled drive (C) |
| 32 osi 55.36"wc | 2332-28/2-T15 | C | 900 | T15-D36T1L8.3C | 8 | 6 | 2923-14-28A | 9-28 | 2942-14-28A | 430 | 700 | 750 |
| | 2332-21/2-T20 | B | 1100 | T20-D36T1L10.0C | 10 | 8 | 2923-18-21A | 10-21 | 2942-18-21A | 680 | 1050 | 830 |
| | 2332-21/2-T25 | B | 1500 | T25-D36T1L10.7C | 10 | 8 | 2923-18-21A | 10-21 | 2942-18-21A | 710 | 1100 | 860 |
| | 2332-21/2-T30 | D | 1800 | T30-D36T1L10.7C | 10 | 8 | 2923-18-21A | 10-21 | 2942-18-21A | 780 | 1150 | 930 |
| | 2332-21/2-T40 | D | 2400 | T40-D36S1L10.7C | 10 | 8 | 2923-22-21A | 10-21 | 2942-22-21A | 810 | 1200 | 960 |
| | 2332-33/2-T50 | D | 3200 | T50-D36T1L12.0C | 12 | 12 | 2923-22.5-33A | 12-33 | 2942-22.5-33A | 1450 | 2250 | 1750 |
| | 2332-33/2-T60 | D | 3900 | T60-D36T1L12.0D | 12 | 12 | 2923-30-33A | 12-33 | 2942-30-33A | 1500 | 2300 | 1800 |
| | 2332-37/1-T75 | A | 6050 | T75-D36S1SCB | 16 | 20 | 2921-1602-8/37 | 16-37 | 2941-1602-8/37 | 1700 | - | - |
| | 2332-37/1-T100 | A | 8070 | T100-D36S1SD | 16 | 24 | 2921-1602-8/37 | 16-37 | 2941-1602-8/37 | 1850 | - | - |
| | 2332-37/1-T125 | A | 9900 | T125-D36S1SDB | 16 | 24 | 2921-1602-8/37 | 16-37 | 2941-1602-8/37 | 2400 | - | - |
| 2332-37/1-T150 | A | 11280 | T150-D36S1SD | 18 | 24 | 2921-1802-8/37 | 18-37 | 2941-1802-8/37 | 2520 | - | - | |
| 44 osi 76.12"wc | 2344-28/3-T15 | C | 640 | T15-D36T1L13.5C | 8 | 6 | 2923-14-28A | 9-28 | 2942-14-28A | 510 | 780 | 830 |
| | 2344-28/3-T20 | C | 900 | T20-D36T1L13.5C | 8 | 6 | 2923-14-28A | 9-28 | 2942-14-28A | 580 | 850 | 900 |
| | 2344-21/2-T30 | D | 1400 | T30-D36T1L10.7C | 10 | 8 | 2923-18-21A | 10-21 | 2942-18-21A | 780 | 1150 | 930 |
| | 2344-21/2-T40 | D | 1900 | T40-D36S1L10.7C | 10 | 8 | 2923-18-21A | 10-21 | 2942-18-21A | 810 | 1200 | 960 |
| | 2344-21/2-T50 | D | 2500 | T50-D36S1L10.7C | 10 | 8 | 2923-22-21A | 10-21 | 2942-22-21A | 900 | 1300 | 1050 |
| 1800 rpm | | | | | | | | | | | | |
| 8 osi 13.84"wc | 2308-44/1-T10 | D | 2700 | T10-C18T1SC | 16 | 16 | 2923-30-44A | 16-44 | 2942-30-44A | 1400 | 2100 | 2000 |
| | 2308-44/1-T15 | D | 4100 | T15-C18T1SC | 16 | 16 | 2923-30-44A | 16-44 | 2942-30-44A | 1450 | 2150 | 2050 |
| | 2308-44/1-T20 | D | 5500 | T20-C18T1SC | 16 | 18 | 2921-1602-6/44 | 16-44 | 2941-1602-6/44 | 1500 | 2200 | 2100 |
| | 2308-44/1-T25 | D | 6500 | T25-C18T1SC | 16 | 18 | 2921-1602-8/44 | 16-44 | 2941-1602-8/44 | 1650 | 2300 | 2200 |
| | 2308-44/1-T30 | D | 7200 | T30-C18T1SC | 16 | 18 | 2921-1602-8/44 | 16-44 | 2941-1602-8/44 | 1650 | 2350 | 2250 |
| | 2308-47/1-T40 | D | 10000 | T40-C18T1SC | 24 | 24 | 2921-2403-12/47 | 24-47 | 2941-2403-12/47 | 1800 | 2100 | 2100 |
| 2308-47/1-T50 | D | 12500 | T50-D18T1SC | 24 | 24 | 2921-2403-12/47 | 24-47 | 2941-2403-12/47 | 1850 | 2200 | 2200 | |
| 10 osi 17.30"wc | 2310-47/1-T40 | D | 8000 | T40-D18T1SC | 24 | 20 | 2923-2403-12/47 | 24-47 | 2941-2403-12/47 | 1800 | 2100 | 2100 |
| | 2310-47/1-T50 | D | 10500 | T50-C18T1SC | 24 | 24 | 2923-2403-12/47 | 24-47 | 2941-2403-12/47 | 1850 | 2200 | 2200 |
| 12 osi 20.76"wc | 2312-41/1-T20 | D | 4000 | T20-C18T1SC | 16 | 16 | 2923-30-41A | 16-41 | 2942-30-41A | 1500 | 2200 | 2100 |
| | 2312-41/1-T25 | D | 4900 | T25-C18T1SC | 16 | 16 | 2923-30-41A | 16-41 | 2942-30-41A | 1600 | 2300 | 2200 |
| | 2312-41/1-T30 | D | 5500 | T30-C18T1SC | 16 | 16 | 2921-1602-6/41 | 16-41 | 2941-1602-6/41 | 1650 | 2350 | 2250 |
| | 2312-47/1-T40 | D | 7100 | T40-C18T1SC | 24 | 18 | 2921-2403-12/47 | 24-47 | 2941-2403-12/47 | 1900 | 2200 | 2200 |
| | 2312-41/1-T40 | D | 7300 | T40-C18T1SC | 16 | 18 | 2921-1602-8/41 | 16-41 | 2941-1602-8/41 | 1750 | 2450 | 2350 |
| | 2312-47/1-T50 | D | 10000 | T50-C18T1SC | 20 | 20 | 2921-2403-12/47 | 24-47 | 2941-2403-12/47 | 1950 | 2300 | 2300 |
| 16 osi 27.68"wc | 2316-41/1-T20 | D | 3000 | T20-D18T1SC | 16 | 12 | 2923-30-41A | 16-41 | 2942-30-41A | 1500 | 2200 | 2100 |
| | 2316-41/1-T25 | D | 3700 | T25-D18T1SC | 16 | 12 | 2923-30-41A | 16-41 | 2942-30-41A | 1600 | 2200 | 2100 |
| | 2316-41/1-T30 | D | 4500 | T30-D18T1SC | 16 | 16 | 2923-30-41A | 16-41 | 2942-30-41A | 1650 | 2250 | 2150 |
| | 2316-41/1-T40 | D | 5500 | T40-D18T1SC | 16 | 16 | 2921-1602-6/41 | 16-41 | 2941-1602-6/41 | 1750 | 2350 | 2250 |
| | 2316-41/1-T50 | D | 7000 | T50-D18T1SC | 16 | 16 | 2921-1602-8/41 | 16-41 | 2941-1602-8/41 | 1800 | 2400 | 2300 |
| | 2316-47/1-T75V | D | 11500 | T75-C18T1SD | 20 | 24 | 2921-2403-12/47 | 24-47 | 2941-2403-12/47 | - | 2400 | - |
| 20 osi 34.6"wc | 2320-41/1-T25 | D | 2600 | T25-D18T1SC | 16 | 12 | 2923-30-41A | 16-41 | 2942-30-41A | 1600 | 2200 | 2100 |
| | 2320-41/1-T30 | D | 3300 | T30-D18T1SC | 16 | 12 | 2923-30-41A | 16-41 | 2942-30-41A | 1650 | 2250 | 2150 |
| | 2320-41/1-T40 | D | 4500 | T40-C18T1SC | 16 | 16 | 2923-30-41A | 16-41 | 2942-30-41A | 1750 | 2350 | 2250 |
| | 2320-41/1-T50 | D | 5800 | T50-C18T1SC | 16 | 16 | 2921-1602-6/41 | 16-41 | 2941-1602-6/41 | 1800 | 2400 | 2300 |
| | 2320-41/1-T60 | D | 7300 | T60-D18T1SD | 16 | 16 | 2921-1602-8/41 | 16-41 | 2941-1602-8/41 | 1900 | 2500 | 2400 |
| 24 osi 41.52"wc | 2324-41/1-T30V | D | 2300 | T30-C18T1SC | 16 | 12 | 2923-30-41A | 16-41 | 2942-30-41A | - | 2250 | - |
| | 2324-41/1-T40V | D | 3500 | T40-C18T1SC | 16 | 12 | 2923-30-41A | 16-41 | 2942-30-41A | - | 2350 | - |
| | 2324-41/1-T50V | D | 4700 | T40-C18T1SC | 16 | 16 | 2923-30-41A | 16-41 | 2942-30-41A | - | 2400 | - |
| | 2324-41/1-T60V | D | 6200 | T60-C18T1SD | 16 | 16 | 2921-1602-8/41 | 16-41 | 2941-1602-8/41 | - | 2500 | - |
| 2324-41/1-T75V | D | 7900 | T75-C18T1SD | 16 | 16 | 2921-1602-8/41 | 16-41 | 2941-1602-8/41 | - | 2550 | - | |
| 32 osi 55.36"wc | 2332-41/2-T75C | D | 4500 | T75-C18T1SD | 16 | 12 | 2923-30-41A | 16-41 | 2942-30-41A | - | - | 2850 |
| | 2332-41/2-T100C | D | 6200 | T100-C18T1SD | 16 | 16 | 2921-1602-8/41 | 16-41 | 2941-1602-8/41 | - | - | 2900 |
| | 2332-41/2-T125C | D | 7100 | T125-C18T1SD | 16 | 16 | 2921-1602-8/41 | 16-41 | 2941-1602-8/41 | - | - | 3100 |
| 38 osi 65.74"wc | 2338-41/2-T75C | D | 3800 | T75-C18T1SD | 16 | 12 | 2923-30-41A | 16-41 | 2942-30-41A | - | - | 2850 |
| | 2338-41/2-T100C | D | 5600 | T100-C18T1SD | 16 | 12 | 2921-1602-6/41 | 16-41 | 2941-1602-6/41 | - | - | 2900 |

WARNING: Situations dangerous to personnel and property may exist with the operation and maintenance of any combustion equipment. The presence of fuels, oxidants, hot and cold combustion products, hot surfaces, electrical power in control and ignition circuits, etc., are inherent with any combustion application. Parts of this product may exceed 160F in operation and present a contact hazard. Fives North American urges compliance with National Safety Standards and insurance Underwriters recommendations, and care in operation.